

JADE SIGNATURE

DEVELOPED BY
FORTUNE INTERNATIONAL

CREATED BY
HERZOG & DE MEURON

INTERIOR ARCHITECTURE
PYR LED BY PIERRE-YVES ROCHON

SIGNATURE RESIDENCE MODEL E1

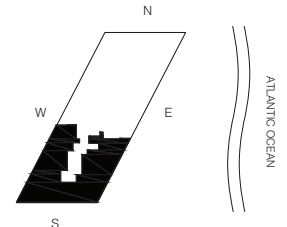
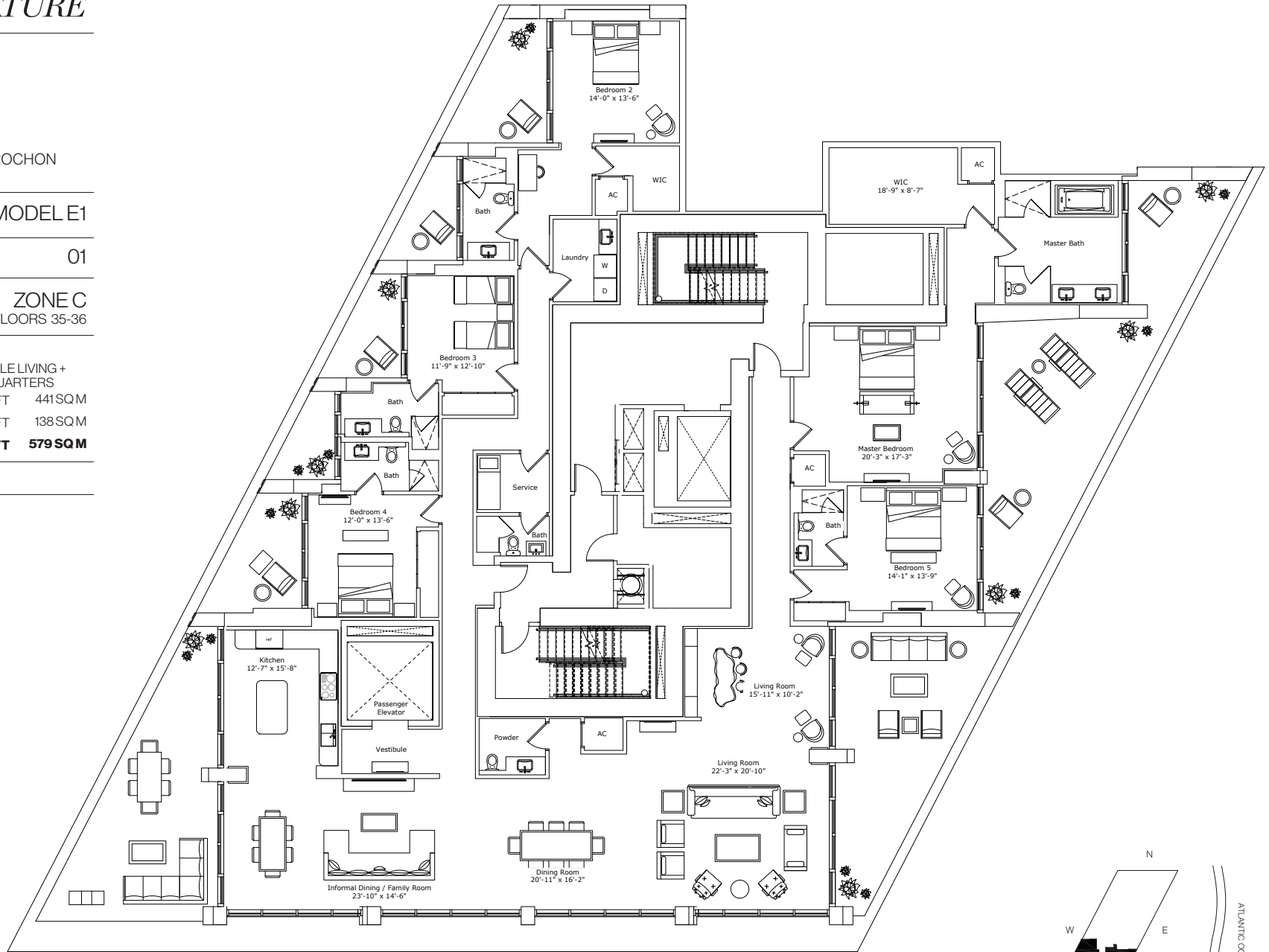
LINE 01

BUILDING ZONE ZONE C
FLOORS 35-36

RESIDENCE DESCRIPTION

5 BED/6.5 BATH + FAMILY + DOUBLE LIVING +
INFORMAL DINING + SERVICE QUARTERS
 INTERIOR 4,738 SQ FT 441 SQ M
 OUTDOOR LIVING 1,491 SQ FT 138 SQ M
TOTAL 6,229 SQ FT 579 SQ M

JADESIGNATURE.COM



STATED DIMENSIONS ARE MEASURED TO THE EXTERIOR BOUNDARIES OF THE EXTERIOR WALLS AND STRUCTURAL MEMBERS AND THE CENTERLINE OF INTERIOR DEMISING WALLS AND, IN FACT, VARY FROM THE DIMENSIONS THAT WOULD BE DETERMINED BY USING THE DESCRIPTION AND DEFINITION OF THE "UNIT" SET FORTH IN THE DECLARATION (WHICH GENERALLY ONLY INCLUDES THE INTERIOR AIRSPACE BETWEEN THE PERIMETER WALLS AND EXCLUDES INTERIOR STRUCTURAL COMPONENTS). ALL DIMENSIONS ARE APPROXIMATE, ARE SUBJECT TO FINAL SURVEY AND MAY VARY WITH ACTUAL CONSTRUCTION. THE FLOOR PLAN, DEVELOPMENT PLANS AND THE ENTITIES COLLABORATING WITH DEVELOPER ARE SUBJECT TO CHANGE. ALL DEPICTIONS OF FURNISHINGS, FINISHES, APPLIANCES, COUNTERS, SOFFITS, FLOOR COVERINGS AND OTHER MATTERS OF DETAIL, INCLUDING WITHOUT LIMITATION, ITEMS OF FINISH AND DECORATION, ARE CONCEPTUAL ONLY AND ARE NOT NECESSARILY INCLUDED IN EACH UNIT. CONSULT YOUR AGREEMENT AND THE PROSPECTUS FOR THE ITEMS INCLUDED WITH THE UNIT. FORTUNE INTERNATIONAL IS NOT THE DEVELOPER. THE CONDOMINIUM IS BEING DEVELOPED BY SUNNY ISLES BEACH ASSOCIATES, LLC, WHICH HAS A LIMITED RIGHT TO USE THE TRADEMARKED NAME AND LOGO OF FORTUNE INTERNATIONAL. ORAL REPRESENTATIONS CANNOT BE RELIED UPON AS CORRECTLY STATING REPRESENTATIONS OF THE DEVELOPER. FOR CORRECT REPRESENTATIONS, MAKE REFERENCE TO THE DOCUMENTS REQUIRED BY SECTION 718.305, FLORIDA STATUTES, TO BE FURNISHED BY A DEVELOPER TO A BUYER OR LESSEE. ARCHITECT OF RECORD - ADD INC.